

# Mastering Lecture Skills: Accent and Intelligibility



***Tatiana Skopintseva***  
New Economic School, Moscow  
[tskopintseva@nes.ru](mailto:tskopintseva@nes.ru)  
March 14, 2018



## ***Factors important to communication***

- Accent **7%**
- Pronunciation **100%**
- Fluency **89%**
- Accuracy **37%**
- Other Reasons **17%**

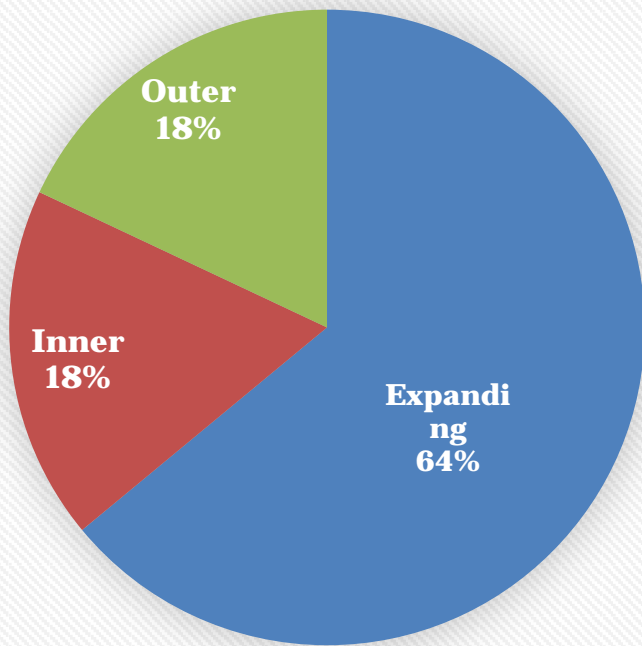
## ***Factors interrupting communication***

- Accent **4%**
- Pronunciation **46%**
- Fluency **41%**
- Accuracy **18%**

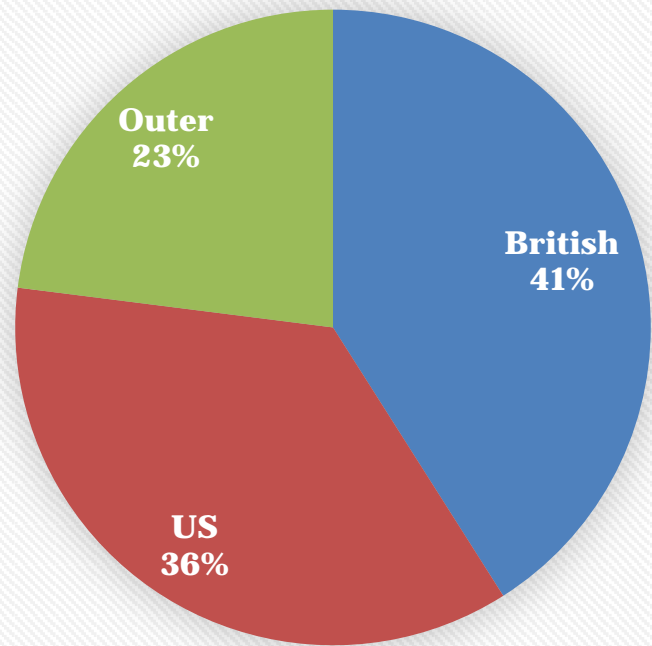
“A Survey of Native English-speakers’ Feelings and Attitudes Toward Non-native Speakers’ English” by Shen, Suqing, Journal of Sichuan International Studies University, Issue 17, Jan. 2001. Pp. 99- 102.

# EFL Educational Model

**Kachru's circles**



**Educational model**



(Yoneoka, J. and Arimoto, J. 2008)

# English Pronunciation from EIL/ELF Perspective

- As a result of regional and social mobility, it is next to impossible nowadays to find a native speaker in possession of the 'pure' standard variety.
- EIL/ELF focuses on pragmatic competences and international communication strategies, where, for successful communication, more importance is placed on discourse intelligibility than native-speaker-like fluency.
- Both NESs and NNESs have to aspire to a mutually intelligible variety of English, which has a distinctive language, pragmatics features that NNESs are using as a means of expressing their sociocultural identities (Seidlhofer & Berns 2009: 190).
- The interlocutor's accent is legitimate.

# Professional Competence for NNEs



## Presenting skills

Presentations

Debates, meetings and negotiations

Self-presenting at job interviews



## Rhetorical competence

Well-structured, coherent, intelligible (and accurate text)

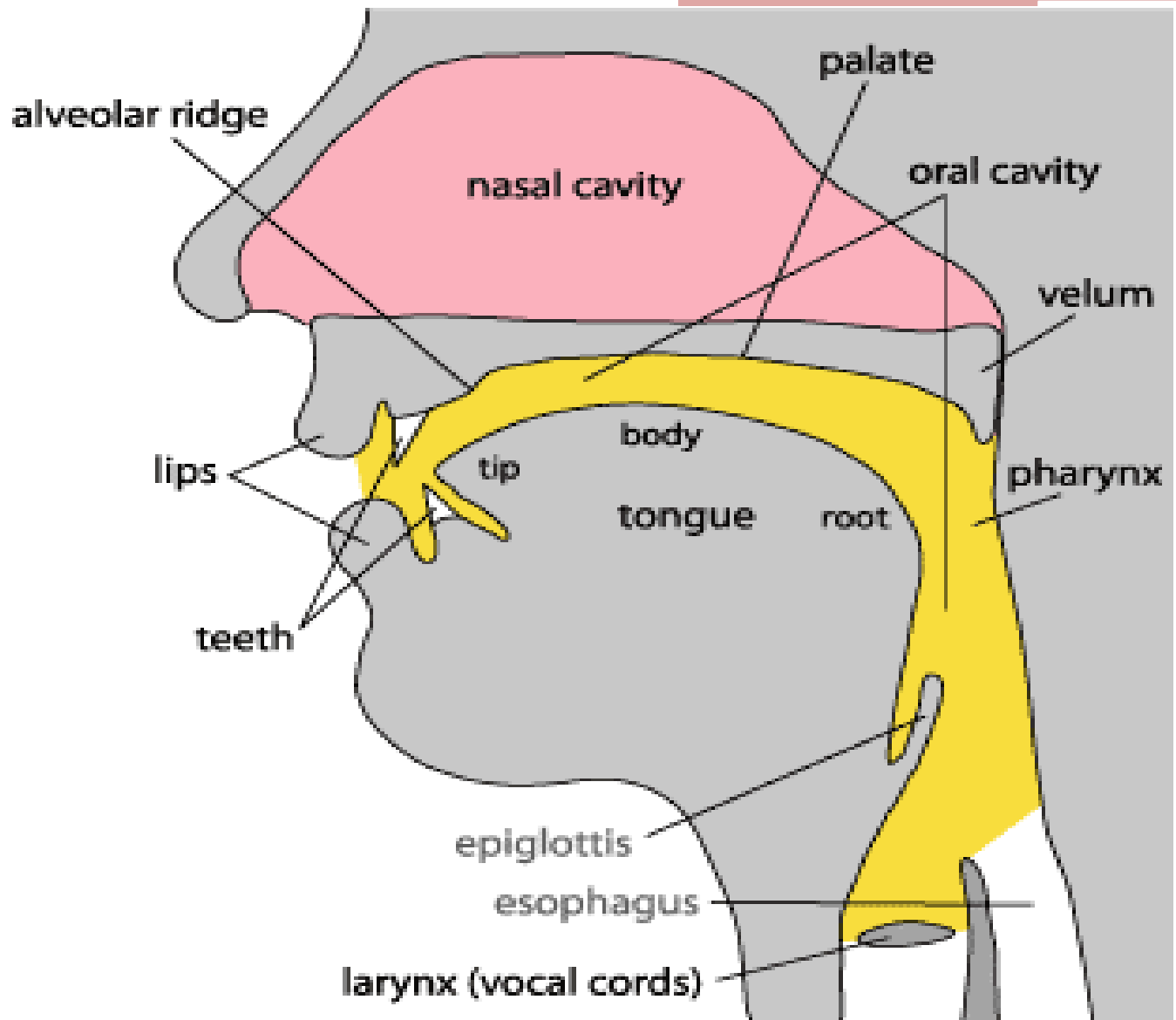


## Sociocultural competence

**intelligibility** of discourse is more important for successful communication than native-speaker-like fluency: participants from different linguistic and sociocultural backgrounds build common ground by promoting **solidarity** and **equally share responsibility** for the success or the failure of communication by adjusting their linguistic and extra - linguistic behavior to each other

**COMMUNICATE MEANING CLEARLY, INTELLIGIBLY, COFIDENTLY  
IN ELF SETTINGS**





По месту ОП По способу ОП	Губно- губные	Губно- зубные	Межзубны е	Апикально_ альвеолярные	Заальвео лярные (какумина льный)	Палатально- альвеолярн ые	Палатальн ые	Велярные	Гортанные
Взрывные Plosives/Stops	b p			t d				g k	
Аффрикаты Affricates						dʒ tʃ			
Фрикативные Fricatives		f v	θ ð	z s		ʃ ʒ			h
Носовые Nasals	m			n				ŋ	
Боковые Lateral				l					
Полусогласные Liquids/approxi nants	w				r		j		



# Tongue Twisters

- **Which witch wished which wicked wish?**
- **Lovely lemon liniment.**
- **Seventy seven benevolent elephants.**
- **Pirates' Private Property.**
- **World Wide Web.**
- **Snout-snout-snout-snout-snout-snout**
- **Smile: Click – click – click**
- **Smile: Click-click-click-click**
- **Candle-jaw-candle-jaw-candle-jaw**
- **Snout-smile-snout-jaw-snout-smile**

# English (20) and Russian (6) Vowels

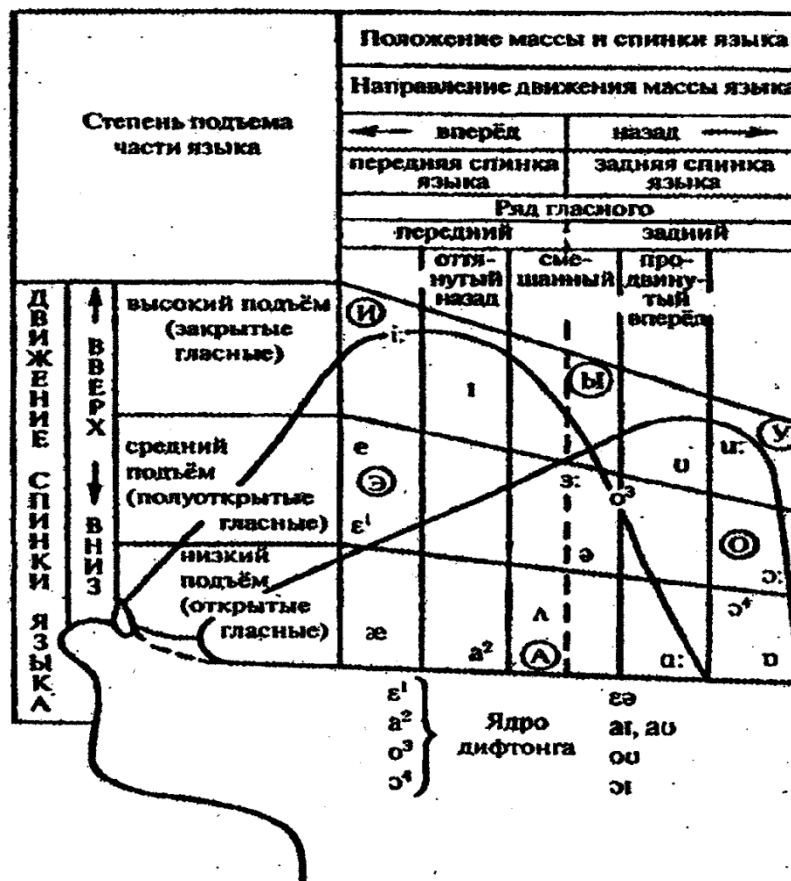


Табл. 1. Английские и русские гласные

## [æ] and [ɒ, ɑ]: Drop the Jaw

- THAT'S the ↘MAN.
  - THAT'S the MAN who HAD a ↘HAT ON.
  - THAT'S the MAN who HAD a FELT hat ↘ON.
  - THAT'S the VErY MAN who HAD a FELT hat ↘ON.
  - THAT'S the VErY MAN who HAD a FELT hat ↘ON, | when it was ↘HOT.
- 
- ❖ WHERE's the ↘WATCH?
  - ❖ WHERE's the WATCH I PUT in my ↘POCKET?
  - ❖ WHERE's the WATCH I PUT in my POCKET to TAke to the ↘SHOP?
  - ❖ WHERE's the WATCH I PUT in my POCKET to TAke to the ↘SHOP, | because it has ↘STOPPED?

# Test Yourself

**bean**      **bin**      **Ben**      **ban**      **bun**      **barn**

**beat**      **bit**      **bet**      **bat**      **but**      **Bart**

**bead**      **bid**      **bed**      **bad**      **bud**      **bard**

**peak**      **pick**      **peck**      **pack**      **Puck**      **park**

# Tongue Twisters

- Which witch wished which wicked wish?
- Lovely lemon liniment.
- Seventy-seven benevolent elephants.
- Ed had edited it.
- Pirates' Private Property.
- World Wide Web.
- Red lorry, yellow lorry.
- Give papa a cup of proper coffee in a copper coffee pot.
- Two toads totally tired.
- How can a clam cram in a clean cream can?

heart  
hard

consequences

work  
walk

lawn – loan  
want – won't

Venice  
Venus

pork  
perk

cause  
course  
curse



Polish  
polish

plays  
place

to  
contrast  
a contrast

quasi

adult  
adult

to  
transfer  
a transfer

entrepreneur

stuff -  
staff

# Thank you!

